

Exploring a new Global Solidarity Accounting

Environment account, process and outcome



IEF 27TH ANNUAL
CONFERENCE

Implementing Solidarity- Global to Local
16 - 22 September, 2023

  Bahá'í
International
Community 

The banner features a teal and green background with a circular inset showing a small green plant growing in soil. A hand is visible on the left side, touching a tree trunk.

Laurent Mesbah 21 September 2023

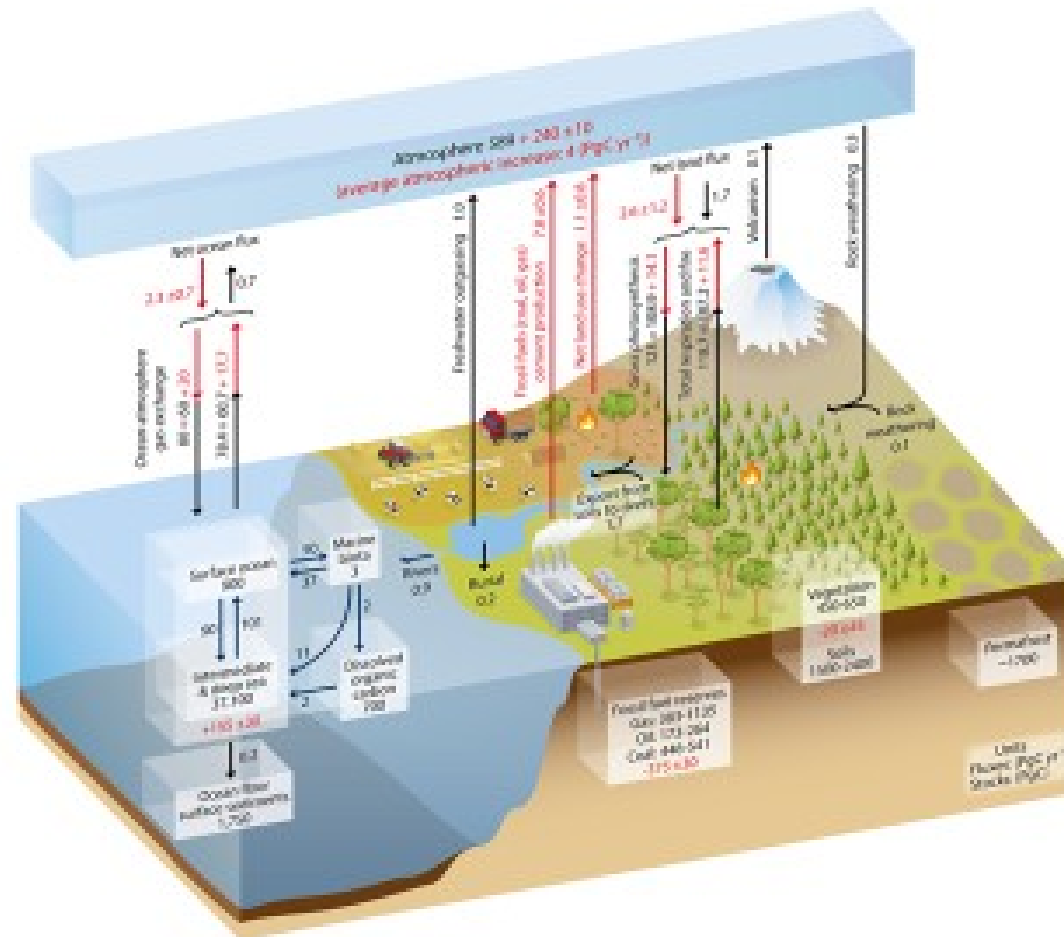
The process

- Initiated at the end of 2021 by the IEF and EBBF, Global Solidarity Accounting reflection and action process included a number of people sharing online their experiences and reflections. Online Working groups were looking for indicators for accounting at health, food, social, economic and environmental issues.

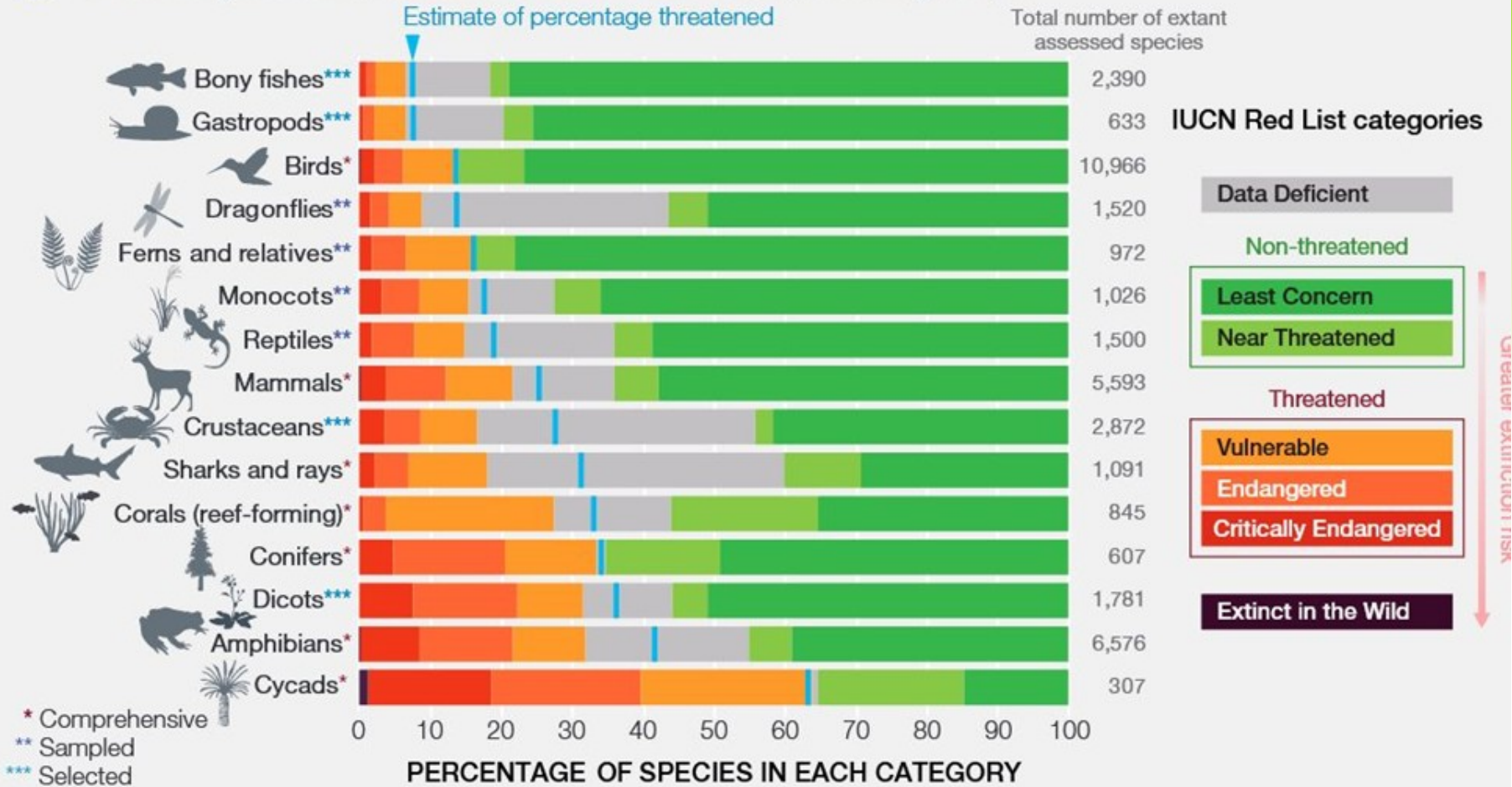
The process

- The working group on environment is the result of the merging of previous working groups on **carbon**, **biodiversity and pollution** accounting. Various online meetings took place with a number of online public presentations. Much of the work done and recordings has been published on the IEF and EBBF websites.

Carbon Cycle



A Current global extinction risk in different species groups



From IPBES

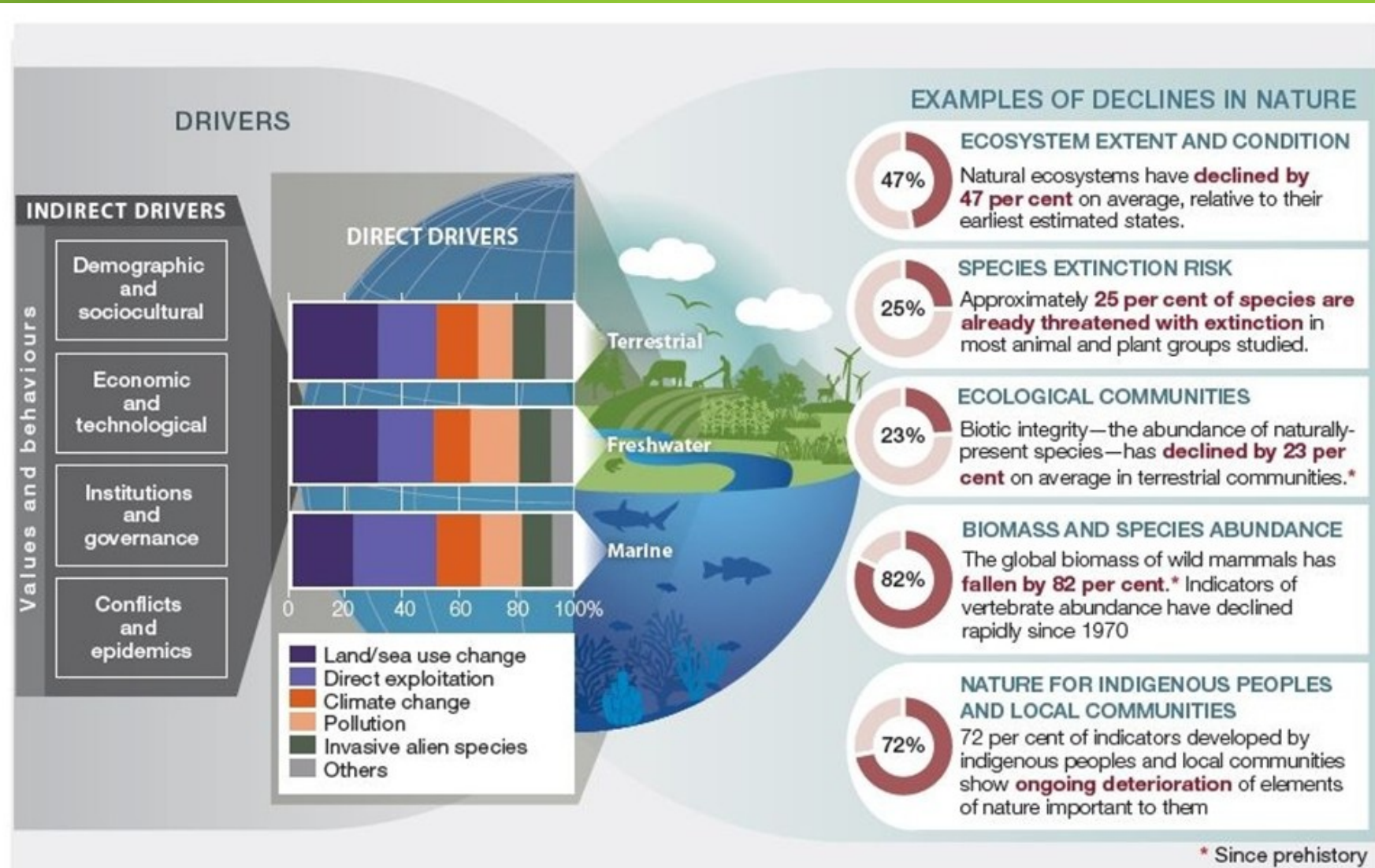


Figure SPM 2 Examples of global declines in nature, emphasizing declines in biodiversity, that have been and are being caused by direct and indirect drivers of change.

Conclusions of the working groups

- **Conclusions for environmental system accounting:**
- Because money and GDP is the main indicator to account and measure progress, current economic system is based on growth which requires an increasing consumption.
- Accounting for Carbon, Biodiversity and Pollution is supported with a rich variety of science-based indicators which provide us with current trends.
- Regulation at the global level is needed for emission of greenhouse gases (IPCC and the UN FCCC, COP 27 in Egypt, for pollution (UN treaty on plastic pollution) for land use UNCCD) , for protecting biodiversity and their ecosystems (the IPBES and UNCBD COP 15 in Montreal and the IPBES). Indeed natural capital (Ecosystems) needs to be maintained functional in order for humanity to continue to benefits from its goods and services including food shelter, beauty fresh air and water, etc.
- With the current economic system based on growth human keep pushing the planetary boundaries which have their own limits, where we often passed these boundaries, action is needed at every level.

Highlight in the process

- **A global perspective is essential in addition to a national, community and individual actions.**
- **Action at the local level with positive examples related to the integrated community building process.**
- **Spiritual foundations for community building**

Examples of actions at the community level on:

- **Climate change mitigation and adaptation.
Community organic garden, sustainable urban farming.**
- **Biodiversity conservation**
- **Earth footprint (pollution) reduction, responsible consumers. Zero waste initiatives**
- **Examples of community based action at the local level will be presented later.**

Public discourse leading to action

- public discourse at the **global level**. Increasing attention of the public on climate change, biodiversity and pollution especially among youth. The Baha I International Community (BIC), the International Environment forum (IEF), the Ethical Business Building the Future (EBBF), the Wilmette Institute, the Global Governance Forum, provide valuable contributions for the public discourse at the global level.
- Public discourse is also engaged at the **local level** and can more easily lead to action at the local level.

Lessons learned in the process

- **“One lesson from the experience so far, illustrated in our case studies, is the power of a Bahá’í-inspired vision of the multiple dimensions of well-being to resonate with people and to inspire consultation about their local relevance. They enable reading their reality in new ways, identifying practical social actions to build stronger communities. Thinking of accountability in this way can provide a framework for many efforts to improve well-being responding to local needs, priorities and capacities”.**
- **Source:**

Action at the local level

- Action at the local level with positive examples related to the integrated community building process.
- Spiritual foundations for community building
- Examples of actions at the community level on:
 - Climate change mitigation and adaptation (energy use)
 - Pollution reduction
 - Biodiversity conservation
 - Earth footprint reduction, responsible consumers. Zero waste initiatives
- Examples presented later
-

Going forward

Going forward beyond the present project, three potentials emerge. One is to develop tools for reading local realities and the relevant values to be expressed, as some local projects have already done. A second is to make the results of this effort available as content to encourage meaningful conversations and to support public discourse about positive ways forward at a time when people are negative, depressed and have lost hope. Then there is the potential to continue contributing to global efforts at the United Nations and elsewhere to replace the reliance on materialistic financial measure of development like GDP, and to focus on human and environmental well-being. Here the unique value added of this contribution will be the spiritual dimension that reflects the Bahá'í vision and values of the society to emerge from the present chaos and confusion.

- Tools to read the reality
- Encourage meaningful conversation and bring hope
- Contribute to local and global efforts to human and environmental well being



Local action

- Presentations

Thank you

IEF 27TH ANNUAL CONFERENCE

Implementing Solidarity- Global to Local

16 - 22 September, 2023



Bahá'í
International
Community

ebbf